

Janko BRAJNIK

2014



Jamarsko društvo - Koper

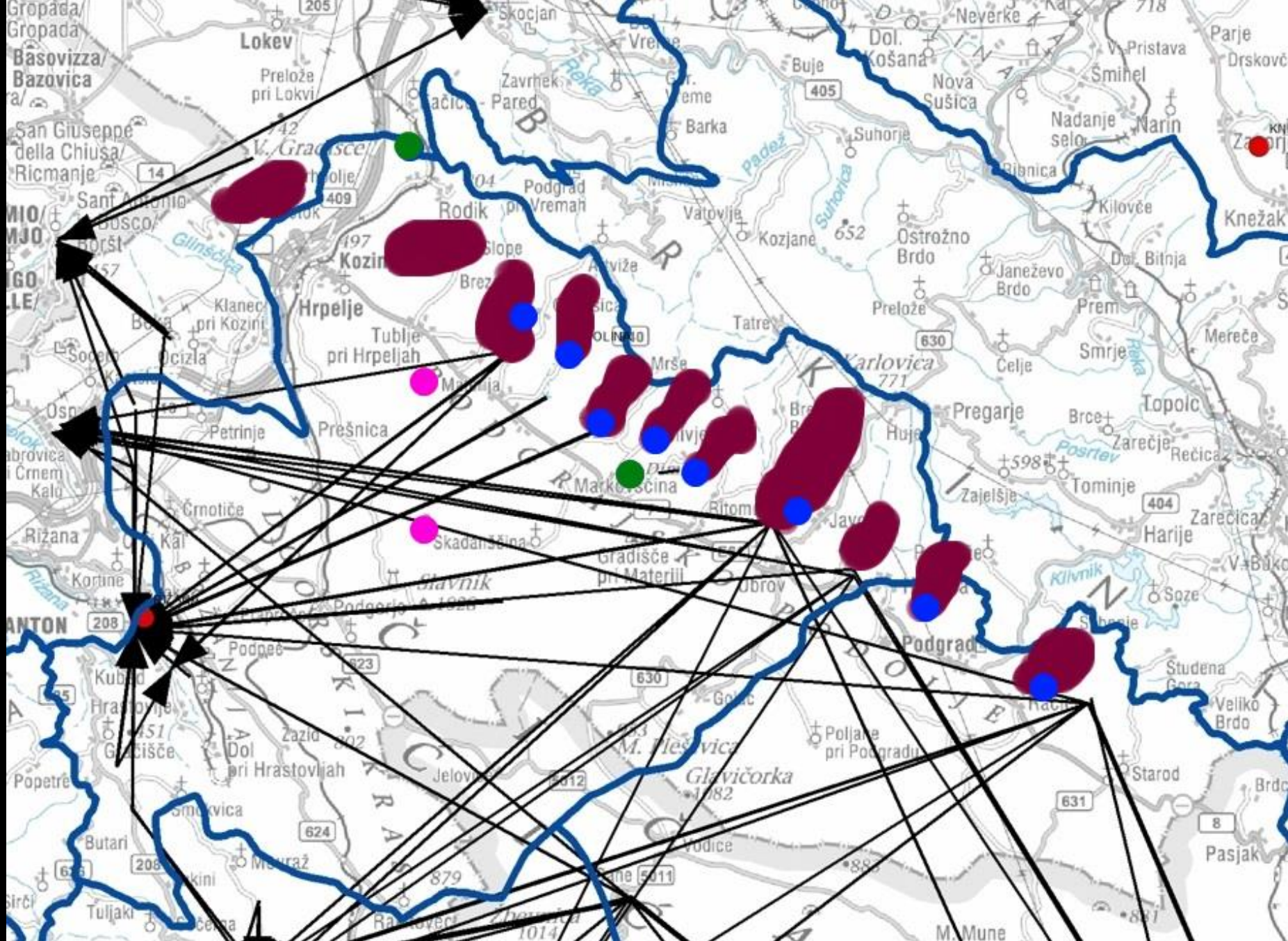
**DIMNICE**

Societa speleologica Capodistria

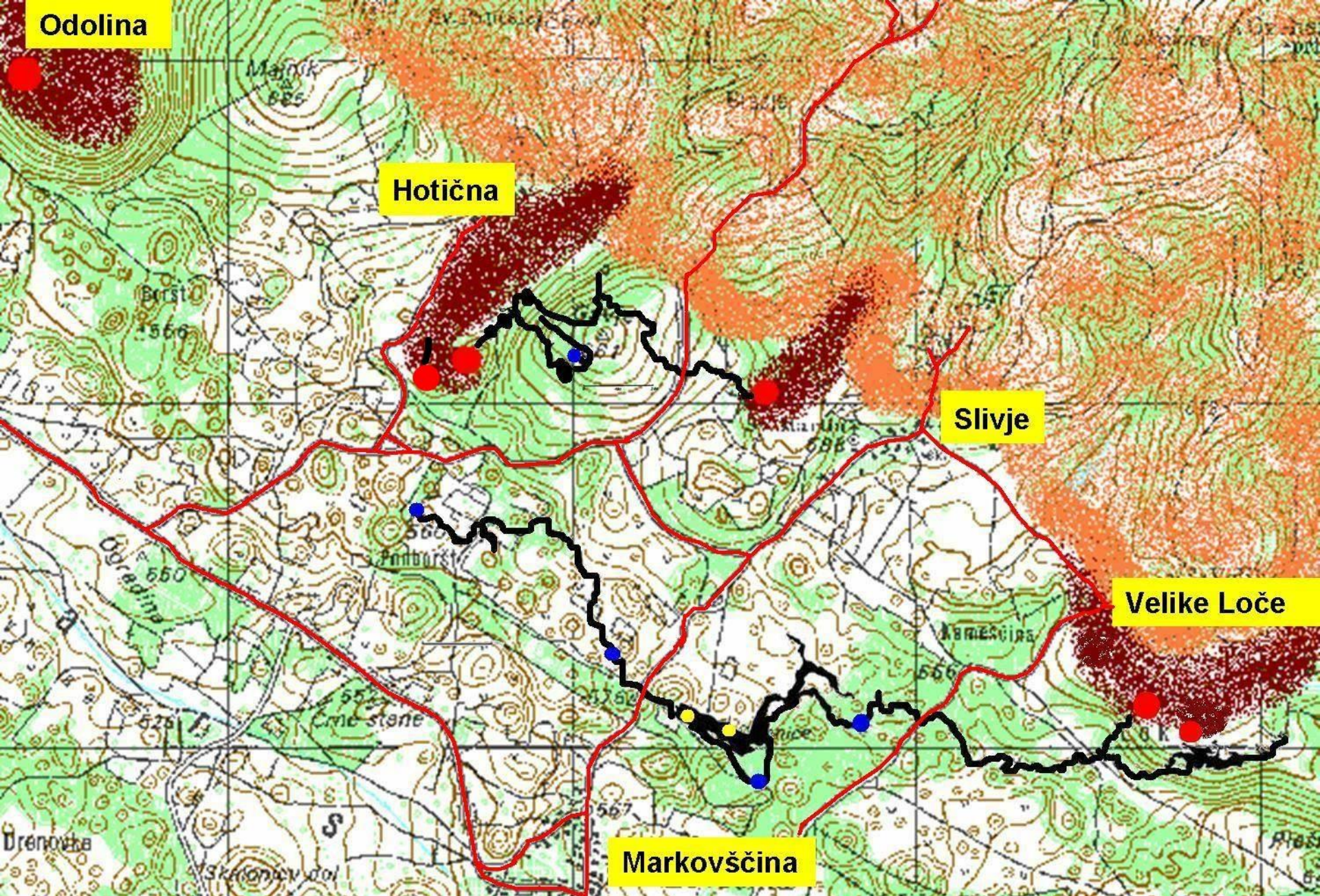
# Ponori v Matarskem podolju



**SI**    **HR**  
EVROPSKO TERITORIALNO SODELOVANJE  
EUROPSKA TERITORIJALNA SURADNJA



**Vodozbirno območje Rižane**



**Dimnice in Hotiško-Sliverski sistem**









Slivje

Za sifoni



Turistična jama



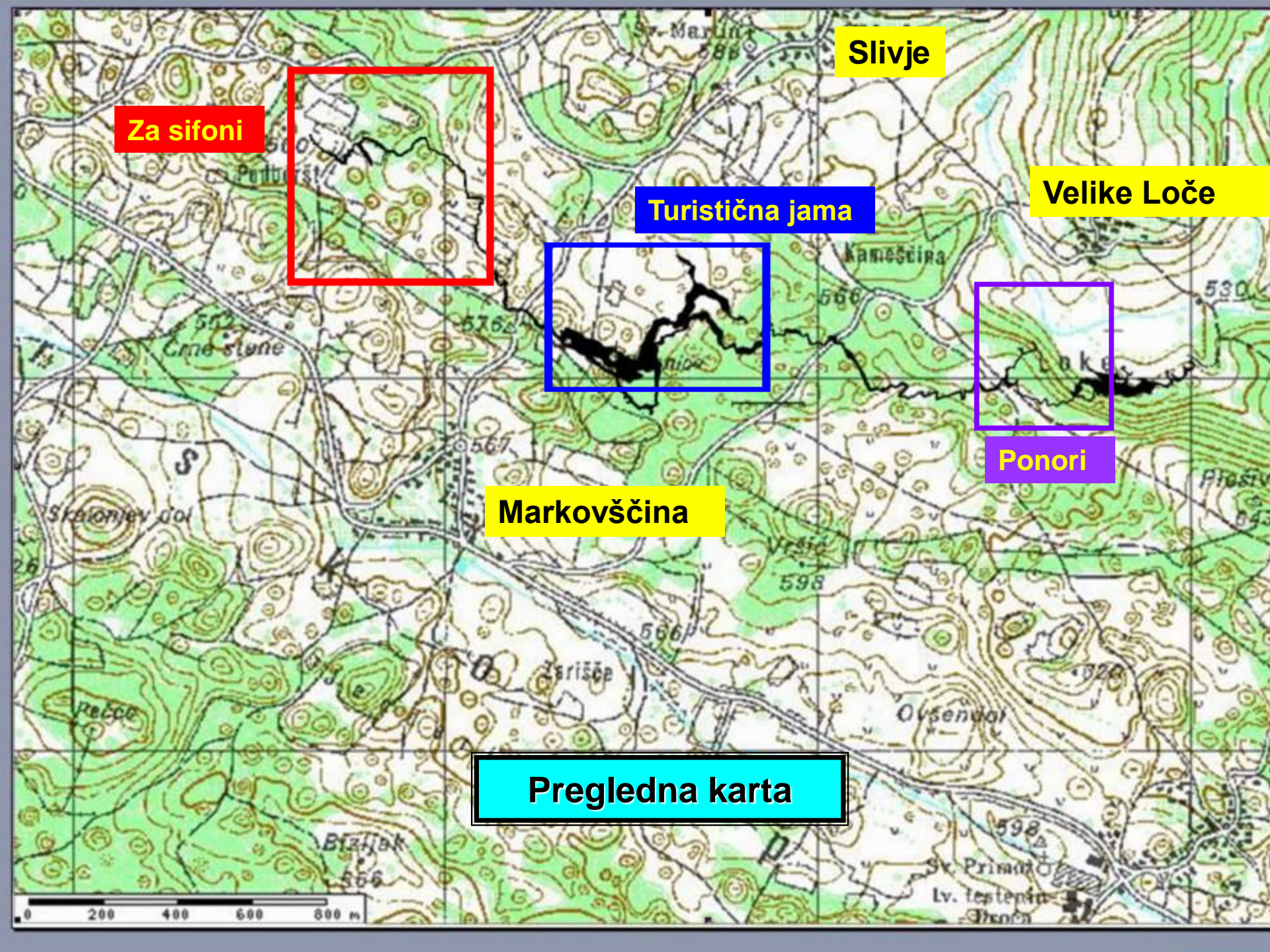
Velike Loče



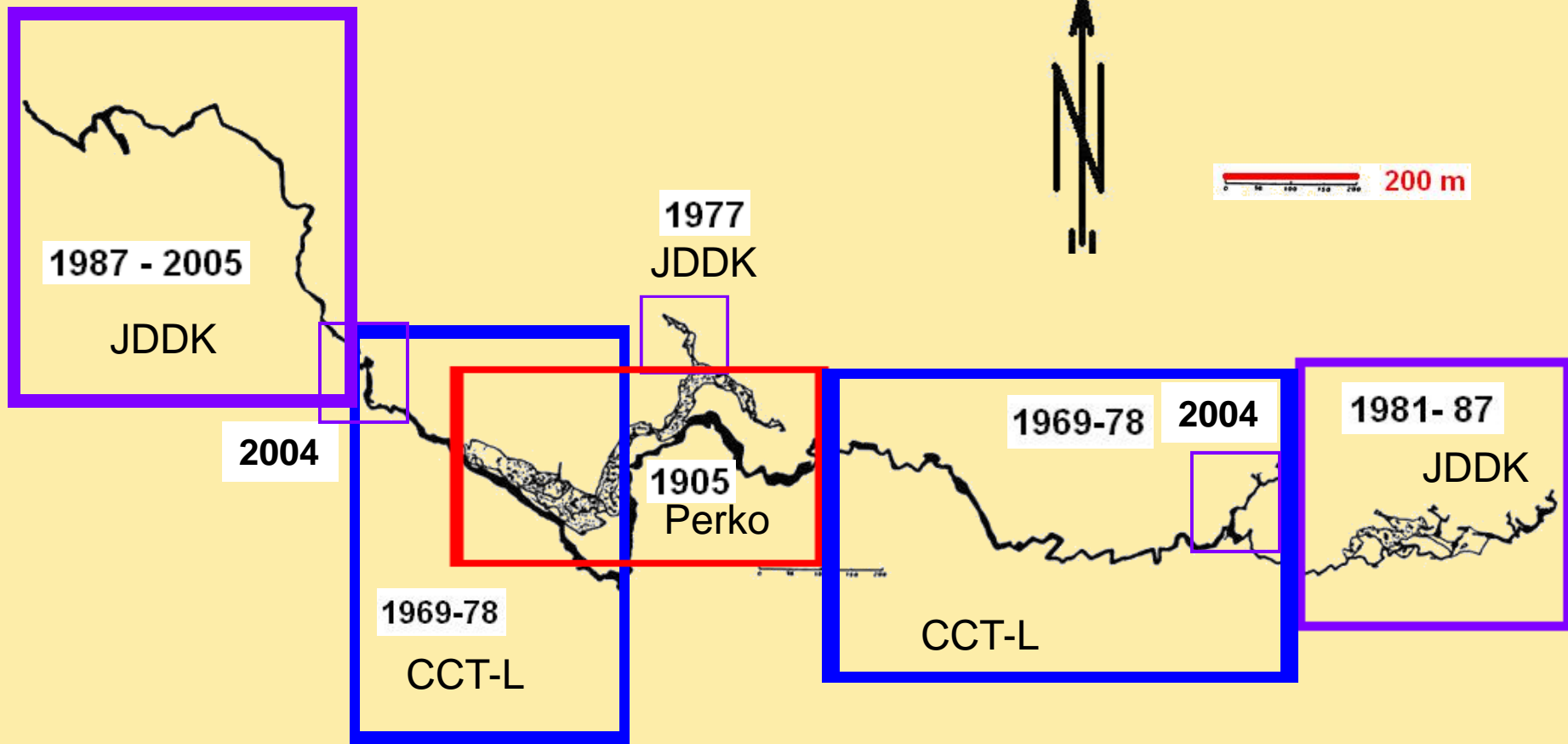
Ponori

Markovščina

Pregledna karta



Dolžina jame = 7786 m  
Globina jame = 189 m



# Dimnice

dinamika raziskav



Ločki potok

požiralk



Visoka voda





ponor





Zajetje



• • MAY • 68

foto Počkaj



Začetki

Po črpalki





**Obhodni sifon**



**Transport opreme**



Žrelo



Prvi sifon



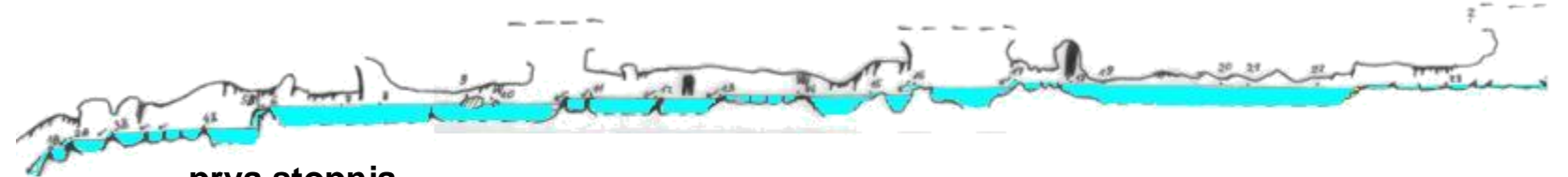
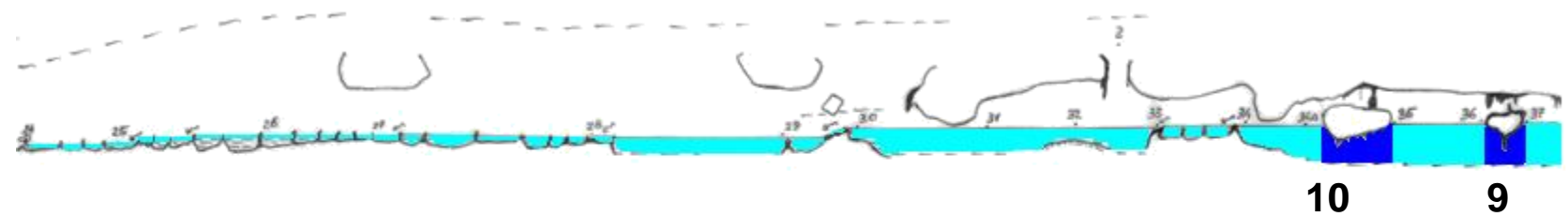
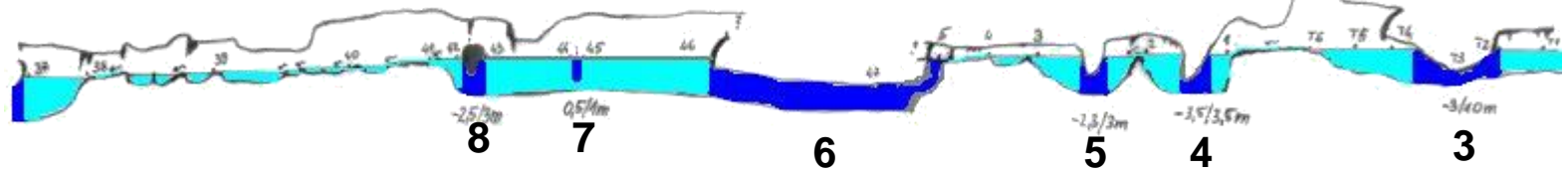
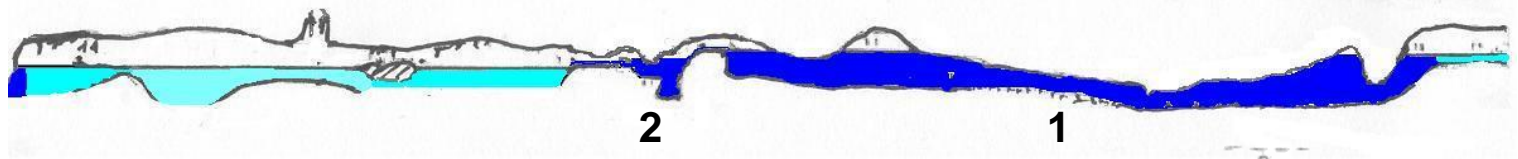
Priprave pred sifonom



Po tretjem sifonu



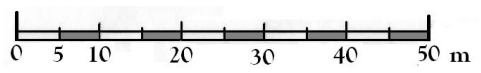
**erodirana siga**

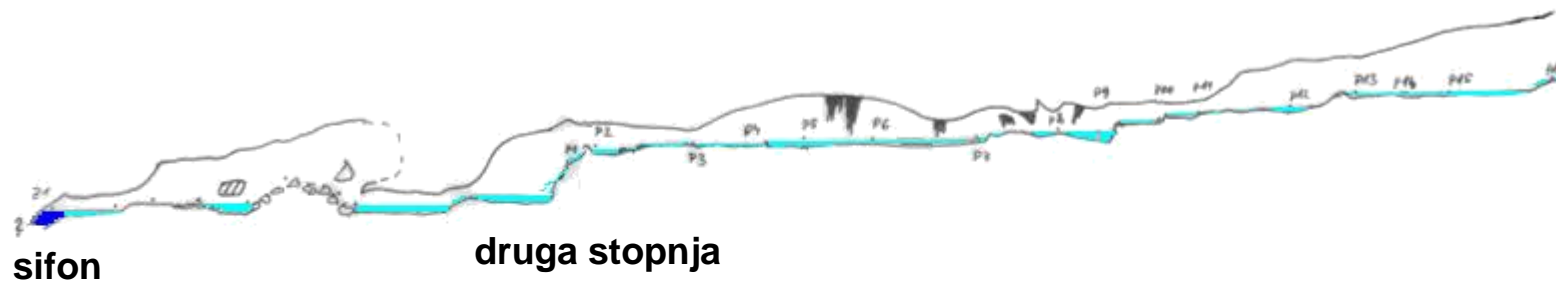


Slap

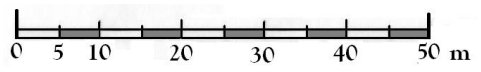
prva stopnja

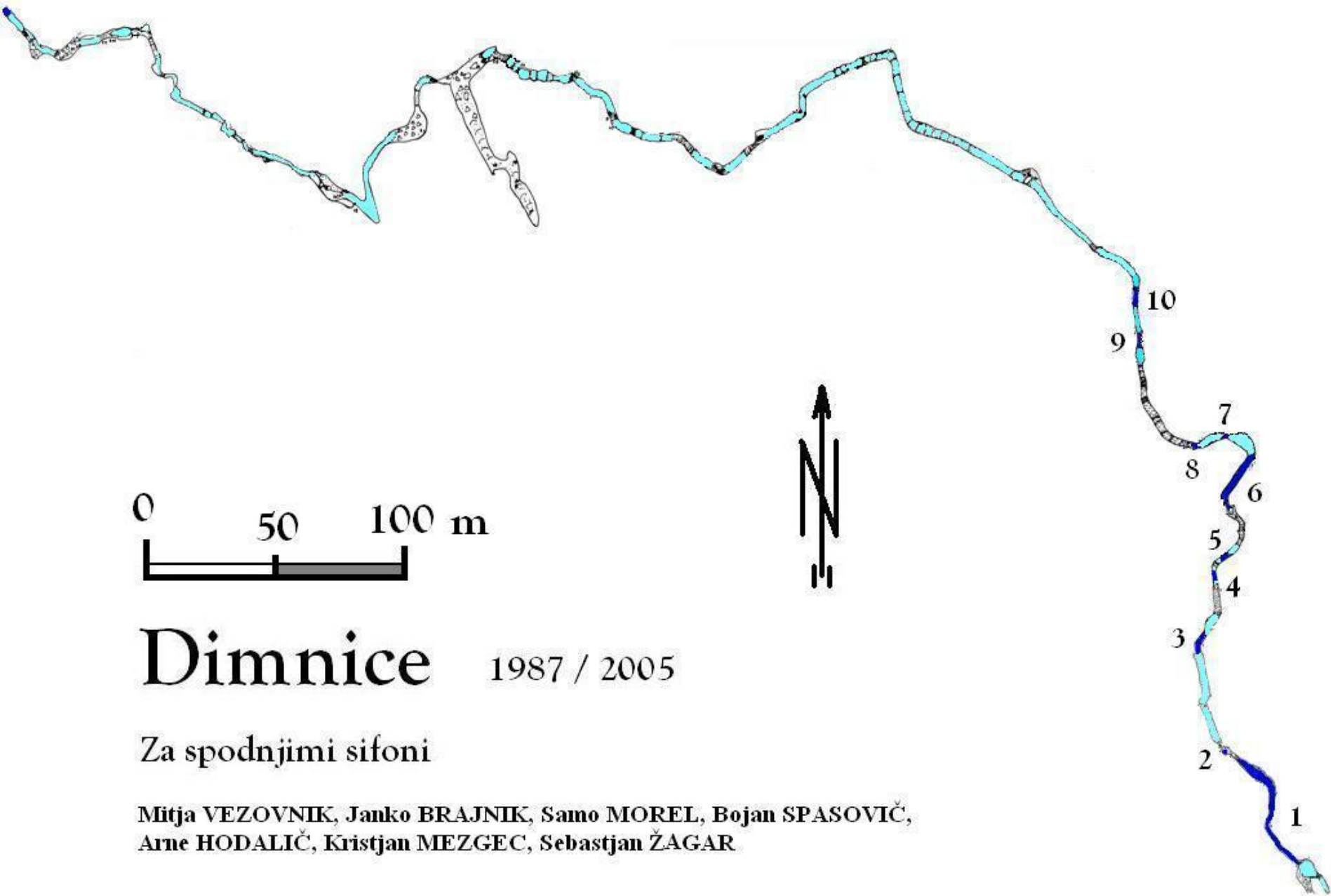
Rov nad Slapom





**Rov pod Slapom**





V drugi sifon





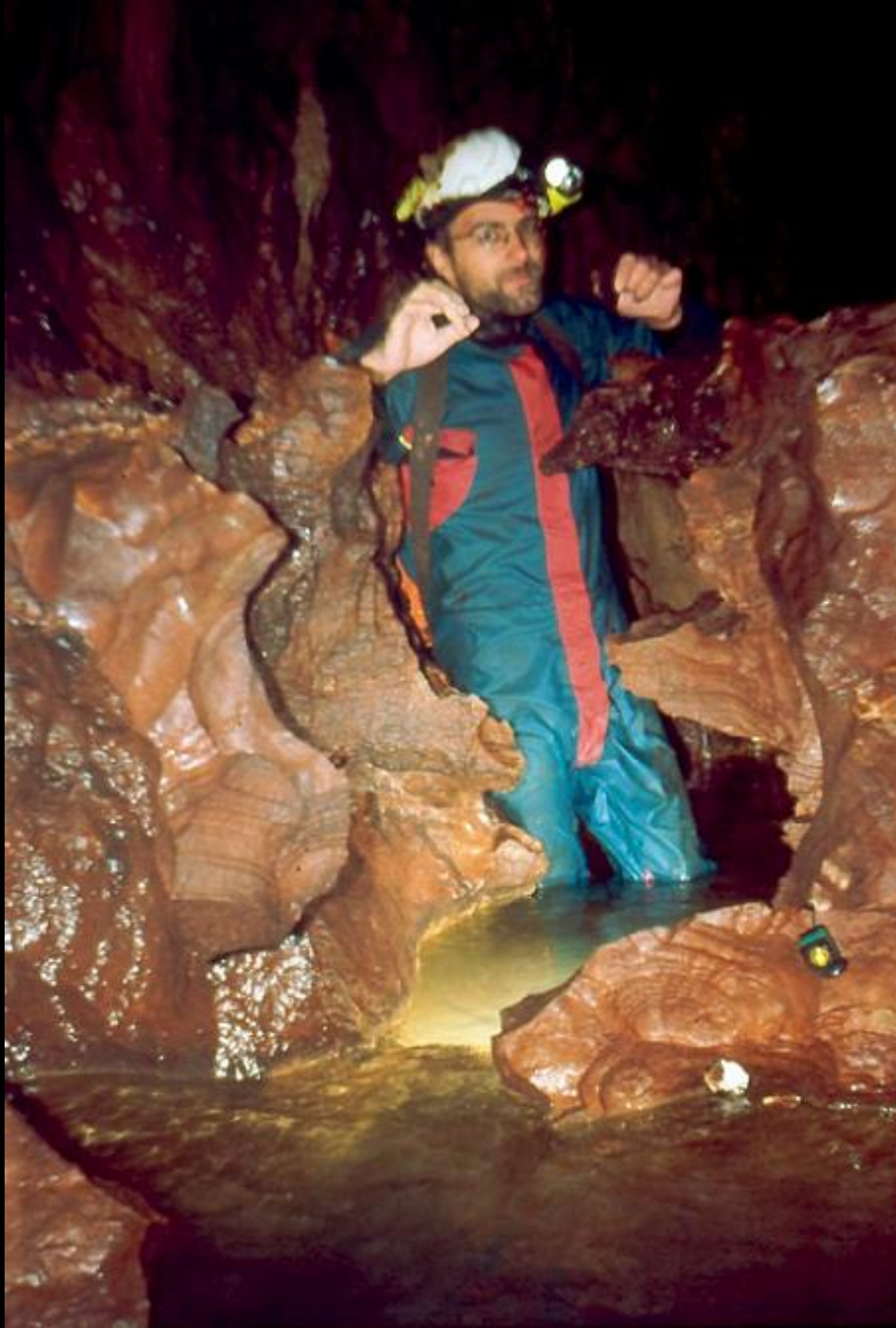
Iz drugega sifona



Zasigana vrvica



Iz ožine drugega sifona



Razžrtost ponvice



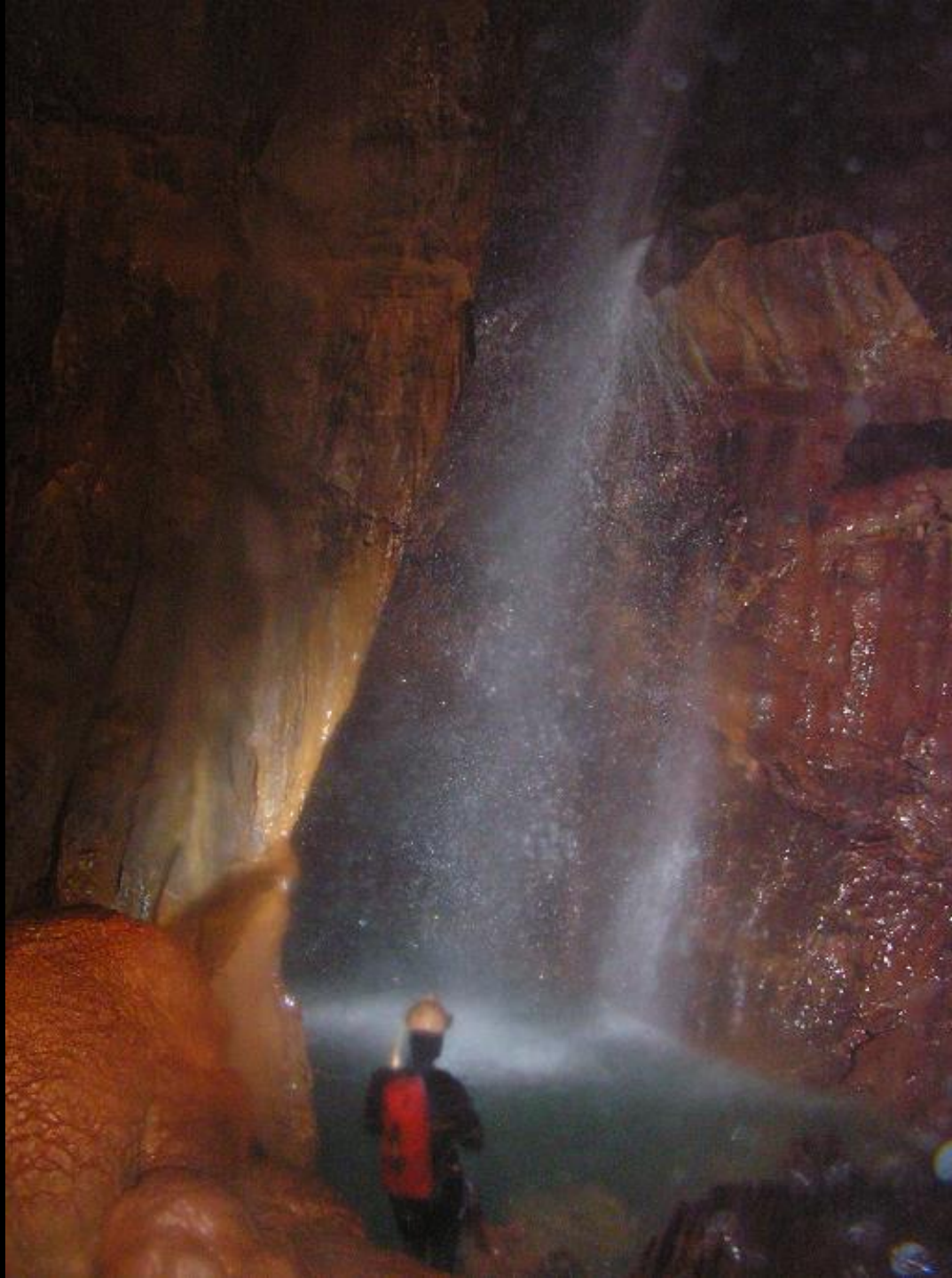
Žeridno



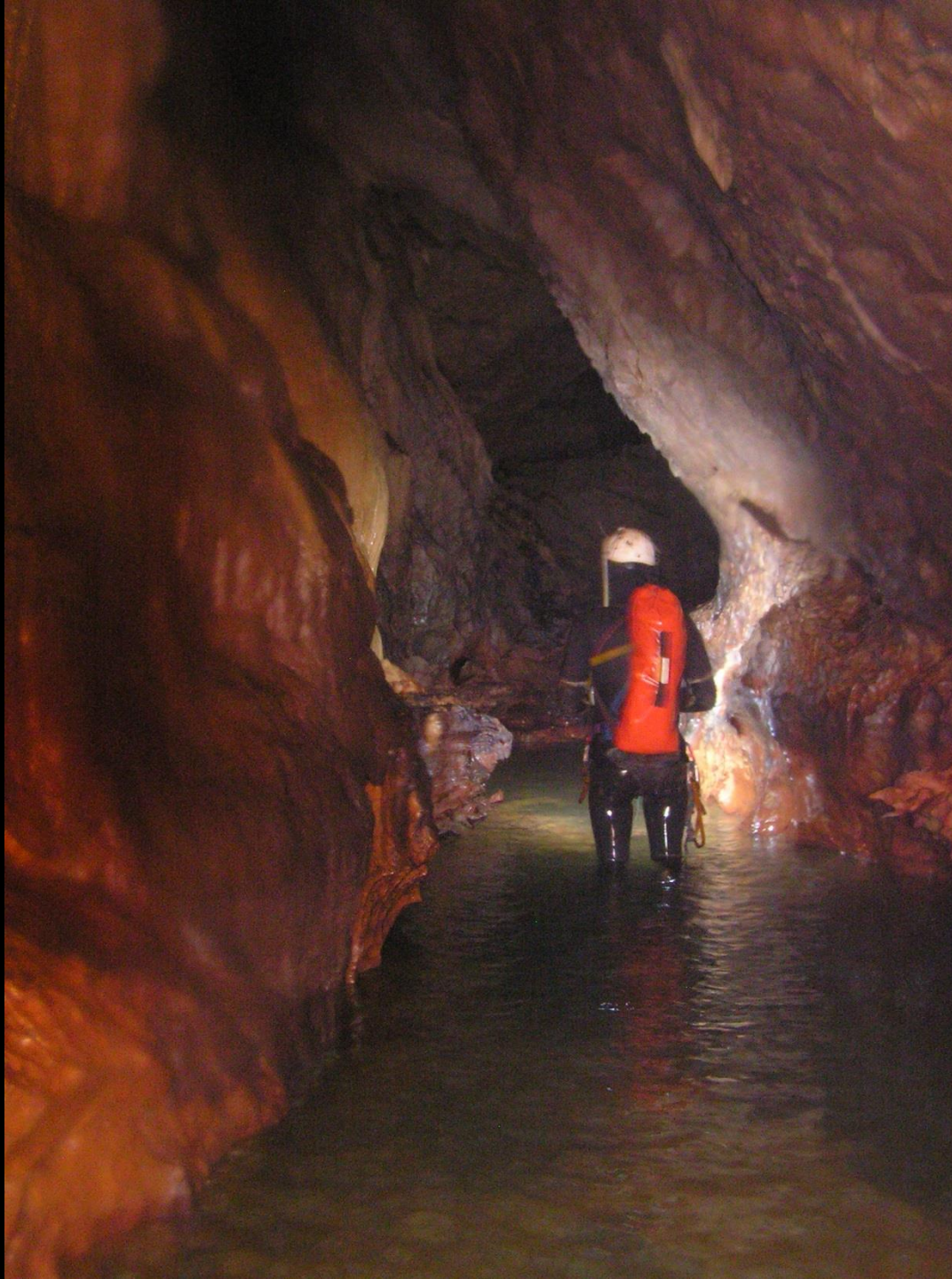
**Nad prvo stopnjo**



**brezno Slap**



**brezno Slap - spodnja tretjina**



Po Slapu



Po Slapu



Po Slapu



**Druga stopnja**



JODX  
3.2.20

**Pred sifonom**

*HVALA*

*ZA*

*POZORNOST*